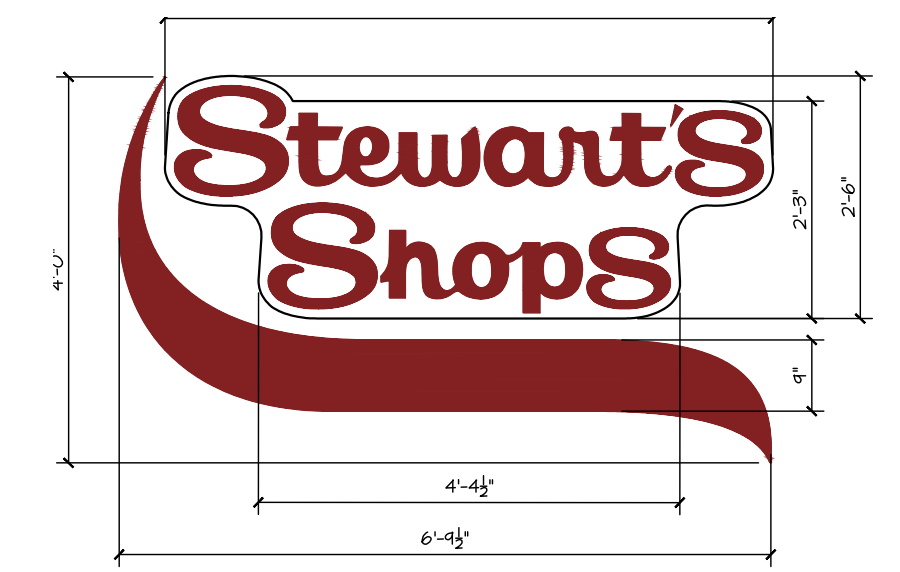
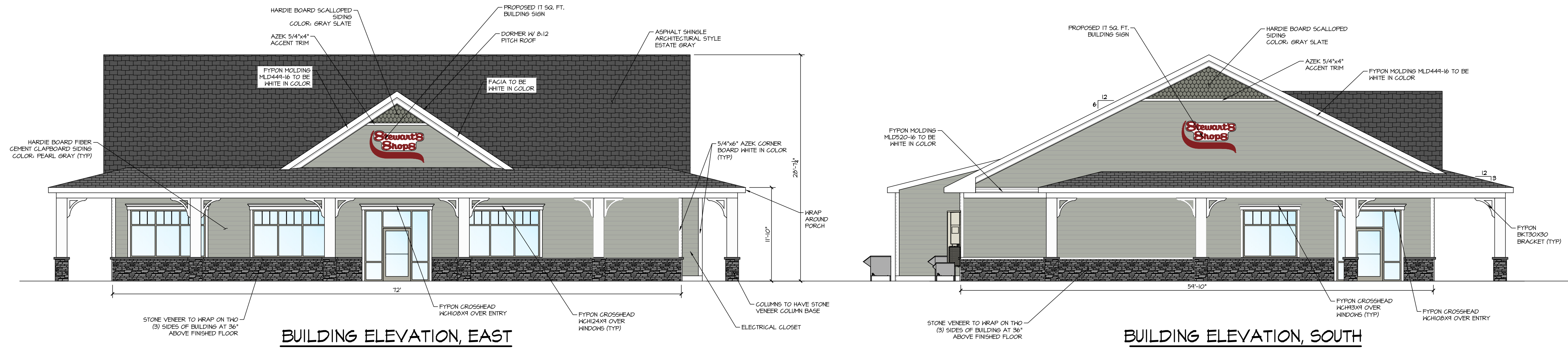


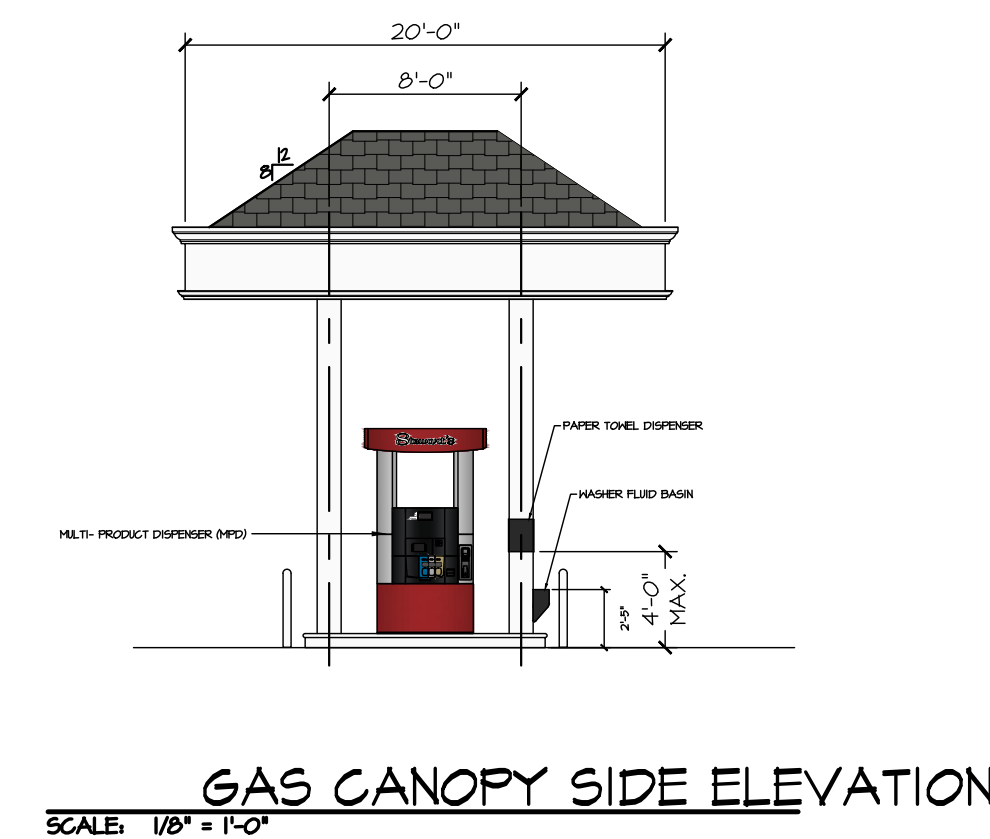
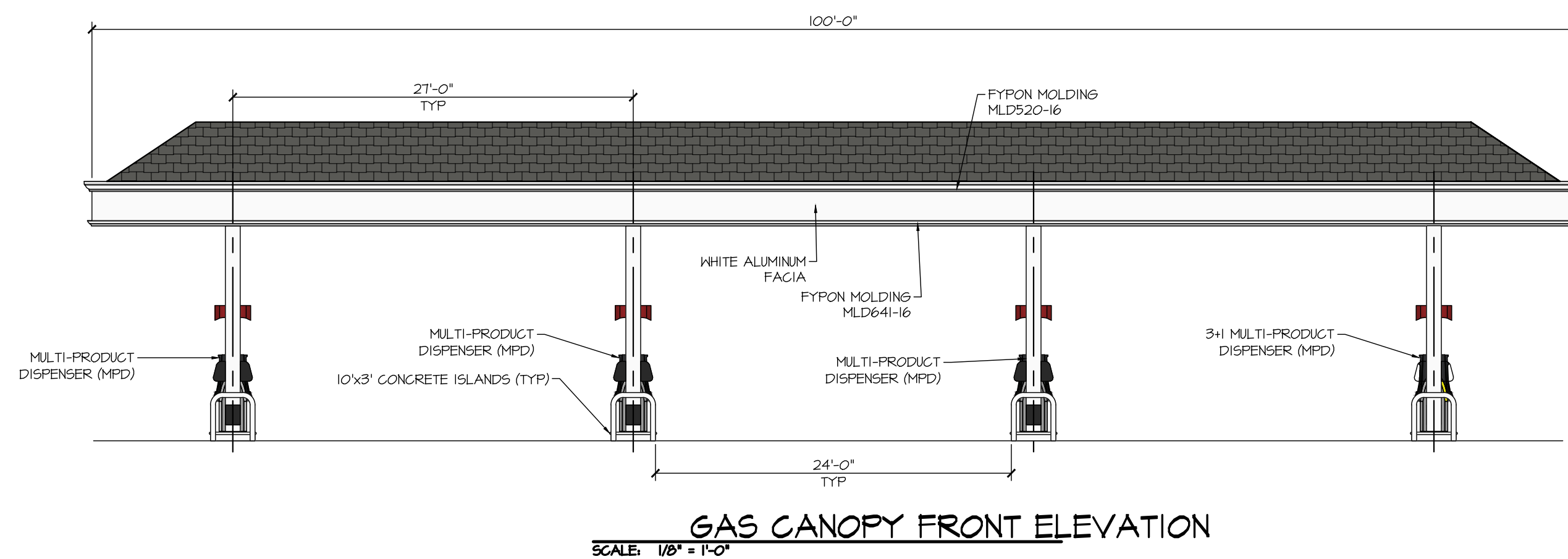
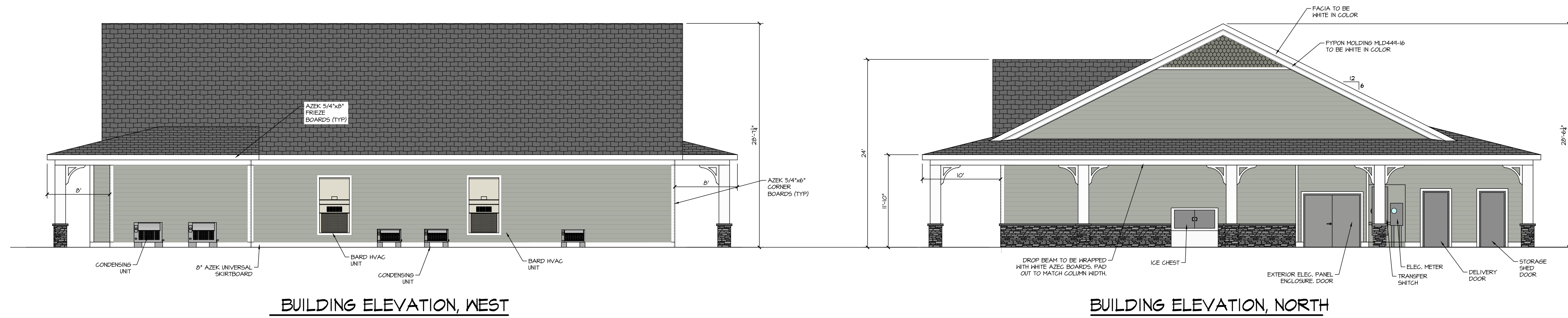
PROPOSED STEWART'S SHOP

27 EAST MAIN STREET - MARCELLUS, NY 13108



TYPICAL BUILDING SIGN

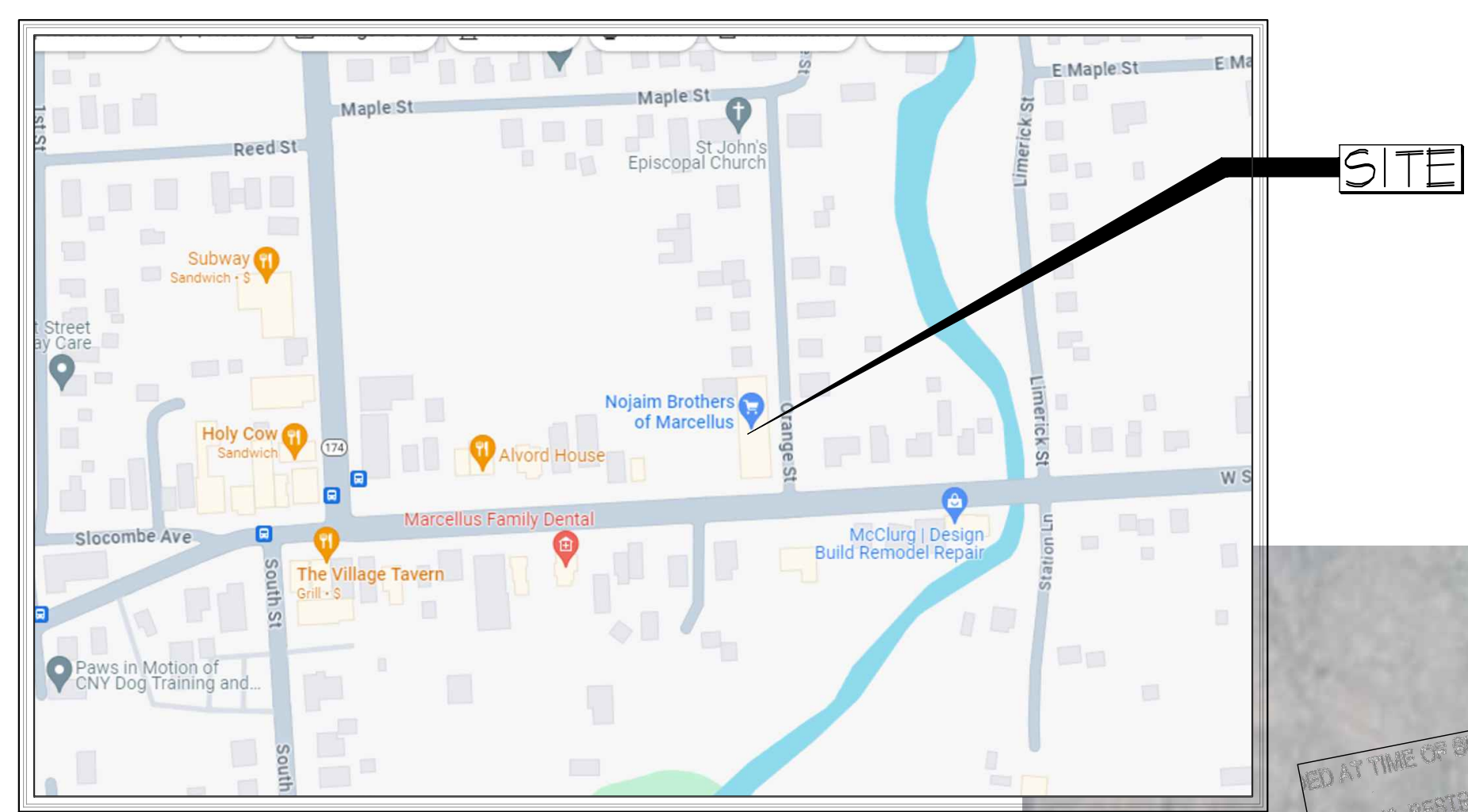
- SIZE: - 11 SQ. FT. (SMOOTH: 2 SF, LETTERS: 15 SF)
- LETTERS: - 1/8" PLEXIGLASS FACE ON 4-1/2" THICK CAN
- ILLUMINATION: - INTERNALLY ILLUMINATED WITH LED LIGHTING
- BURGUNDY LETTERS
- WHITE COLOR BACKGROUND



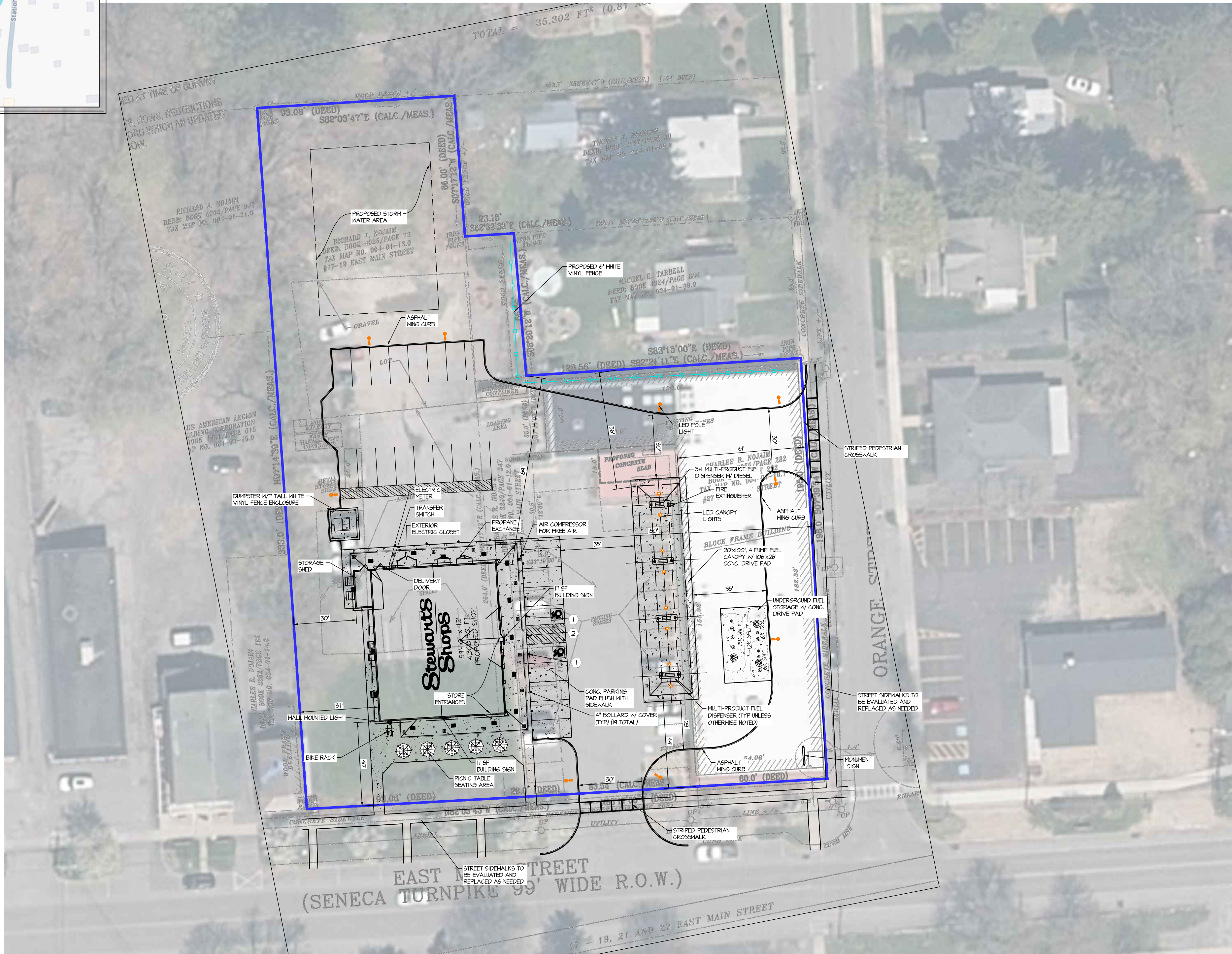
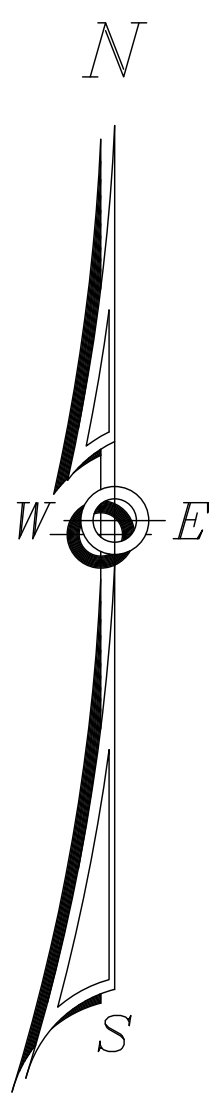
PROPOSED MONUMENT SIGN

- SCALE: 3/8" = 1'-0"
- SIZE: - 4'-9"x6'-9" = 32 SQ. FT.
 - LETTERS: - 1/8" PLEXIGLASS FACE ON 4-1/2" THICK CAN
 - ILLUMINATION: - INTERNALLY ILLUMINATED WITH LED LIGHTING
 - BURGUNDY LETTERS
 - WHITE COLOR BACKGROUND
 - 12" RED LED GAS PRICE NUMBERS
 - 12" GREEN LED DIESEL PRICE NUMBERS

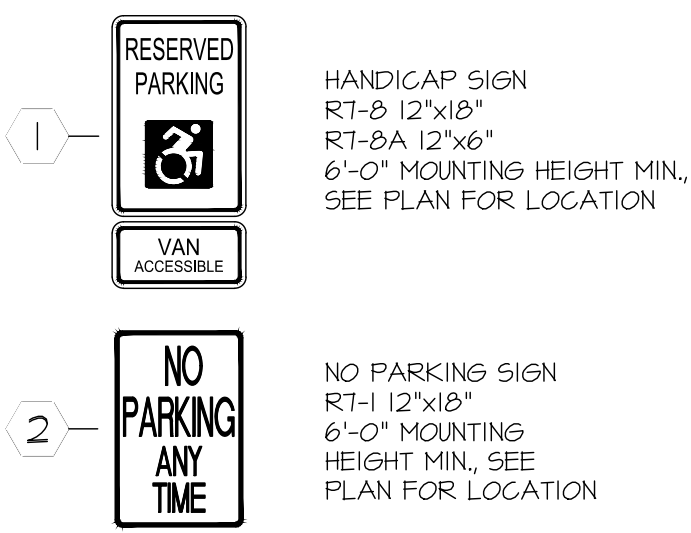
	STORE NAME, ABBREVIATION & NO.		MARCELLUS - MRC - 335	
	SITE LOCATION		27 EAST MAIN STREET - MARCELLUS, NY 13108	
	DATE	NO.	REVISIONS	
	DRAWN BY: MA		SCALE: NTS	
DATE: 1-2-2024		DRAWING NO. T-1		
		SARATOGA SPRINGS, NY 12866 TEL: (518)581-1200 FAX: (518)581-1209		
ALTERNATIONS TO THIS DOCUMENT BY OTHER THAN AN AUTHORIZED LICENSED PROFESSIONAL ENGINEER IS ILLEGAL AND A VIOLATION OF THE NEW YORK STATE EDUCATION LAW		TITLE: TITLE SHEET		



SITE LOCATION MAP
SCALE: N.T.S.



- SIGN KEY:**
- 1) ALL SIGNS ARE TO CONFORM WITH N.Y.S.D.O.T. STANDARD SECTION 645.
 - 2) SIGN POST TO BE SECURED IN BOLLARD WITH SAND
 - 3) SIGNS SHALL BE MOUNTED TO GALVANIZED U CHANNEL POSTS IN THE LOCATIONS INDICATED ON THE PLAN.



LEGEND	
PROPERTY LINE	---
FIRE HYDRANT	
WATER VALVE	
GAS VALVE	
SEWER MANHOLE	
SEWER CLEANOUT	
CURB INLET	
CATCH BASIN	
GUY WIRE	
UTILITY POLE	
SIGNPOST	
TRAFFIC SIGNAL CONTROL BOX	
POLE LIGHT	
WELL	
BOLLARD	
IRRIGATION SLEEVE	
OVERHEAD UTILITIES	--- OHW ---
WATER SERVICE, 1" TYPE "K" COPPER	--- W ---
SEWER SERVICE, 4" SDR 26	--- S ---
STORM PIPE, PROPOSED, HDPE	--- STP ---
STORM PIPE, EXISTING	--- STP ---
STOCKADE FENCE	--- SF ---
CHAINLINK FENCE	--- CL ---
SPLITRAIL FENCE	--- SL ---
U/G ELECTRICAL/TELE SERVICE	--- U/E/T ---
U/G ELECTRICAL CONDUIT	--- U/E ---
U/G GAS LINE	--- G ---
U/G CAMERAL CONDUIT, SINGLE	--- CAM ---
U/G CAMERAL CONDUIT WITH GTY	--- CAM-2X ---
DIESEL PRODUCT LINE	--- DSL ---
SUPPER PRODUCT LINE	--- SUP ---
UNLEADED PRODUCT LINE	--- UNL ---
EXISTING MAJOR CONTOUR	--- 100 ---
EXISTING MINOR CONTOUR	--- 100 ---
PROPOSED MAJOR CONTOUR	--- 100 ---
PROPOSED MINOR CONTOUR	--- 100 ---
PROPOSED SPOT ELEVATION	
EXISTING UNCHANGED SPOT ELEVATION	

VILLAGE OF MARCELLUS

ONONDAGA COUNTY PARCELS #: 004-01-10.1, 004-01-12.0 & 004-01-13.0
 ZONE: VILLAGE CENTER (VC)
 USE: CONVENIENCE STORE WITH GASOLINE

	EXISTING	PROPOSED	REQUIRED
LOT AREA	63,496 +/- SF (1.46 AC)	63,496 SF (1.46 AC)	-
FRONT BLDG SETBACK (N)	0 FT	40 FT	-
FRONT BLDG SETBACK (E)	0 FT	151 FT	-
SIDE BLDG SETBACK (W)	114 FT	30 FT	-
REAR BLDG SETBACK (S)	0 FT	90 FT	-
CANOPY FRONT SETBACK (N)	N/A	44 FT	-
CANOPY FRONT SETBACK (E)	N/A	63 FT	-
CANOPY SIDE SETBACK (W)	N/A	150 FT	-
CANOPY REAR SETBACK (S)	N/A	54 FT	-
SIGNS (BUILDING)	-	2 @ 11 SF EACH	-
PARKING SPACES	-	25	-

	EXISTING SITE USAGE DATA		PROPOSED SITE USAGE DATA	
GREENSPACE	14,754 SF	(23%)	26,823 SF	(42%)
BUILDING	14,711 SF	(23%)	4,450 SF	(7%)
PAVEMENT	26,640 SF	(42%)	9,375 SF	(15%)
GRAVEL	7,336 SF	(12%)	22,248 SF	(36%)

STORE NAME, ABBREVIATION & NO. **MARCELLUS - MRC - 335**

SITE LOCATION **27 EAST MAIN STREET - MARCELLUS, NY 13108**

DATE	NO.	REVISIONS

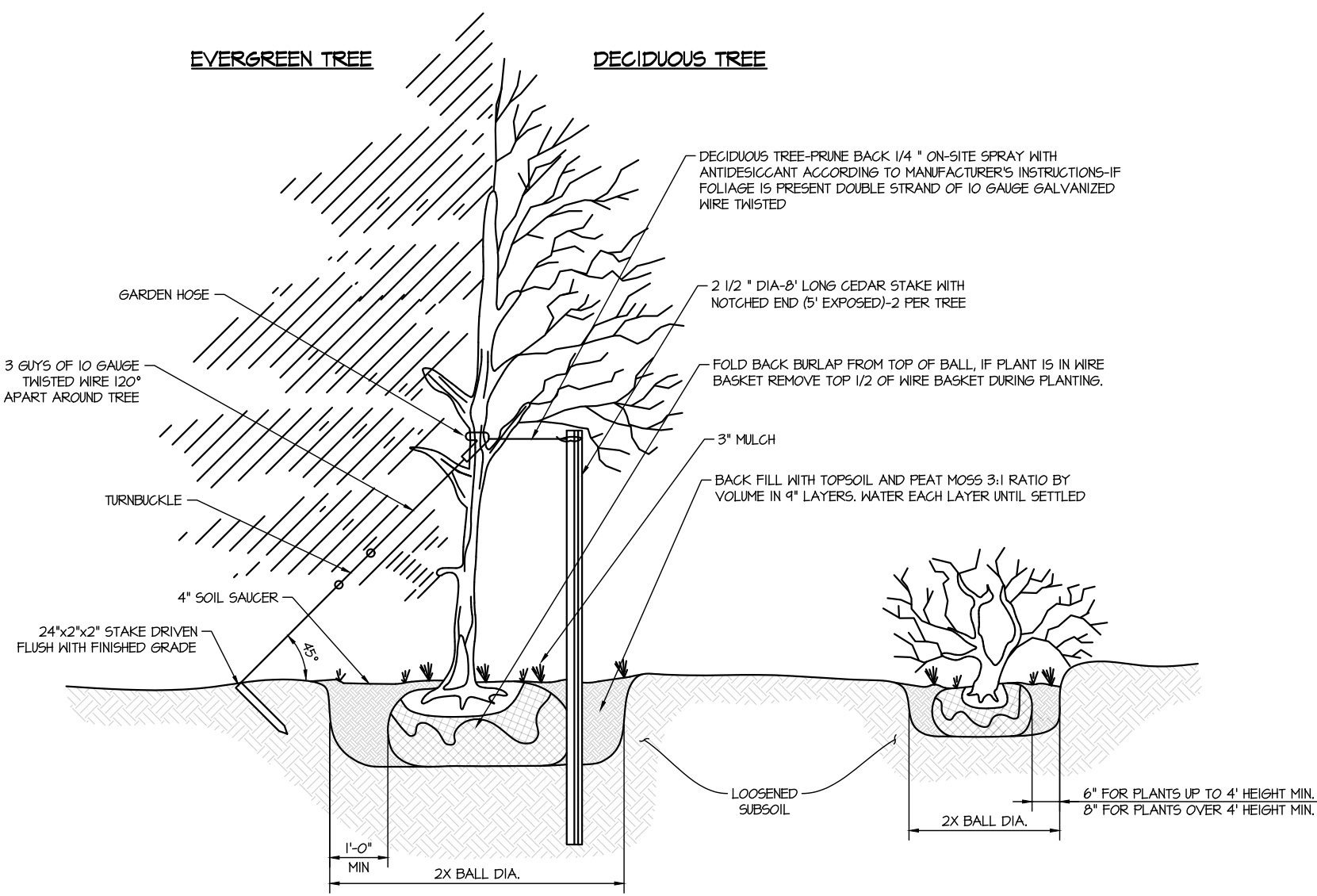
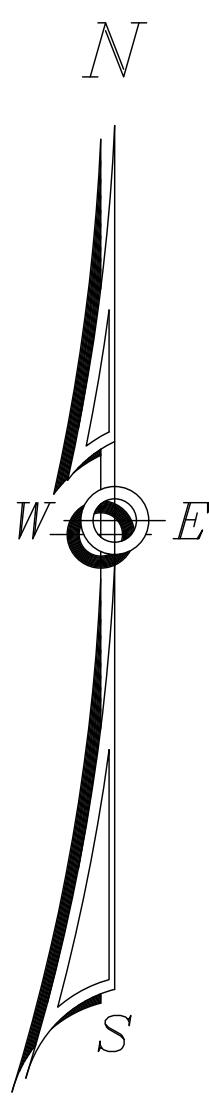
SARATOGA SPRINGS, NY 12866
TEL: (518)581-1200 FAX: (518)581-1209

DRAWN BY: MA
SCALE: 1" = 30'
DATE: 1-2-2024
DRAWING NO. **5-2**

TITLE: **PROPOSED SITE PLAN**

ALTERATIONS TO THIS DOCUMENT BY OTHER THAN AN AUTHORIZED LICENSED PROFESSIONAL ENGINEER IS ILLEGAL AND A VIOLATION OF THE NEW YORK STATE EDUCATION LAW

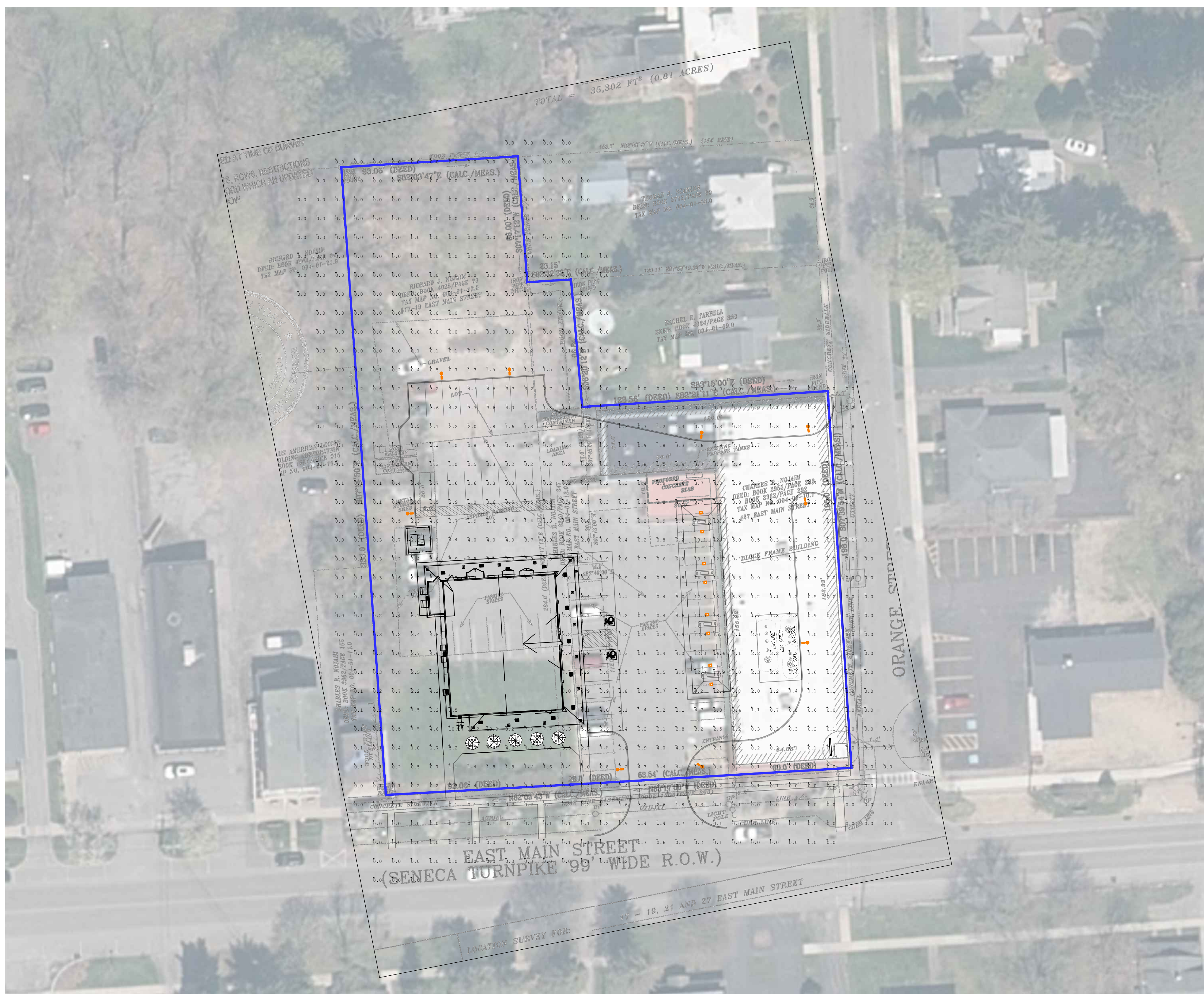
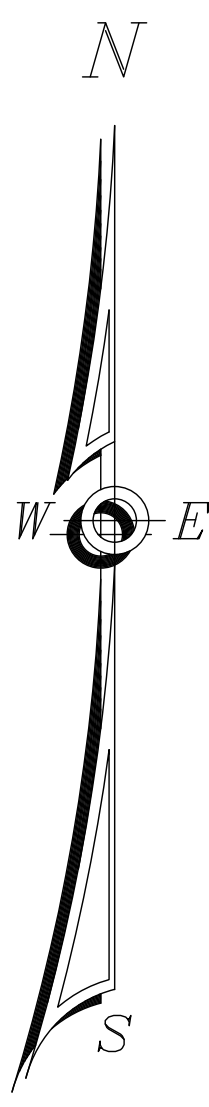
1. SOME FEATURES IN LEGEND MAY NOT HAVE BEEN USED.
 2. DARKER LINES INDICATE NEW WORK.
 3. DOTTED LINES INDICATE REMOVED ITEMS.



- PLANTING NOTES:**
- 1) DECIDUOUS PLANTING SEASONS
SPRING: APRIL - MAY 20
FALL: OCTOBER 1 - NOVEMBER 5
 - 2) ALL PLANTS SHALL BE GUARANTEED AND MAINTAINED BY LANDSCAPE CONTRACTOR FOR A PERIOD OF 1 YEAR AFTER BEING PROPERLY PLANTED.
 - 3) ALL LANDSCAPING SHALL BE MAINTAINED IN PERPETUITY AND DEAD OR DYING PLANTS SHALL BE REPLACED AS EQUAL BY STEWART'S.
 - 4) HEAP DECIDUOUS TREES OVER 1" CAL WITH PLASTIC TREE GUARDS REMOVE TREE GUARDS AFTER A MIN OF 2 WINTERS AND BEFORE A MAX OF 3 WINTERS.
 - 5) EVERGREEN TREE-GROUND LINE TO BE THE SAME AS EXISTED AT THE NURSERY TREE.
 - 6) CALIPER IS TO BE MEASURED AT A HEIGHT OF 4'.
 - 7) ALL STAKES AND GUY WIRES TO BE REMOVED 2 YEARS AFTER INITIAL PLANTING.

PLANTING DETAIL

	STORE NAME, ABBREVIATION & NO.		MARCELLUS - MRC - 335		
	SITE LOCATION		27 EAST MAIN STREET - MARCELLUS, NY 13108		
	DATE	NO.	REVISIONS		
		DRAWN BY:	MA		
SARATOGA SPRINGS, NY 12866 TEL: (518)581-1200 FAX: (518)581-1209		SCALE:	1" = 30'		
		DATE:	1-2-2024		
		DRAWING NO.	S-6		
ALTERATIONS TO THIS DOCUMENT BY OTHER THAN AN AUTHORIZED LICENSED PROFESSIONAL ENGINEER IS ILLEGAL AND A VIOLATION OF THE NEW YORK STATE EDUCATION LAW		TITLE:			LANDSCAPE PLAN



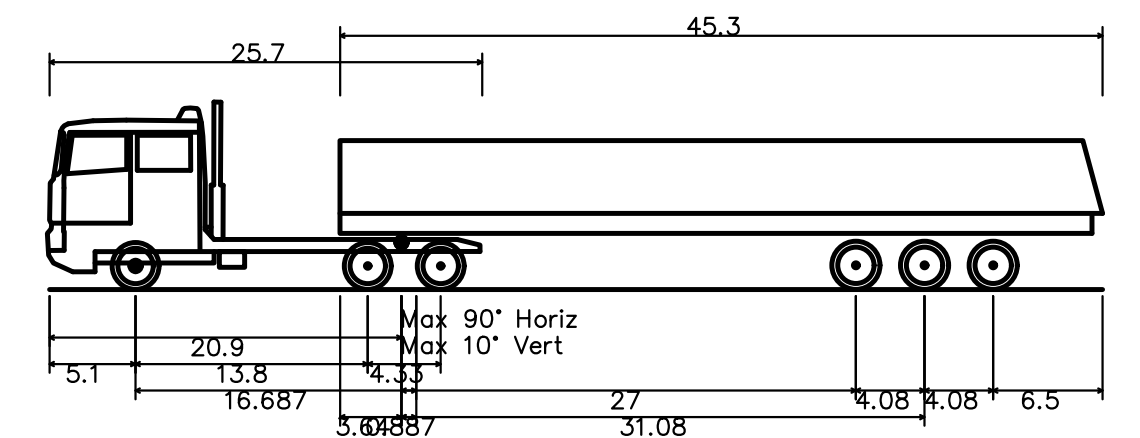
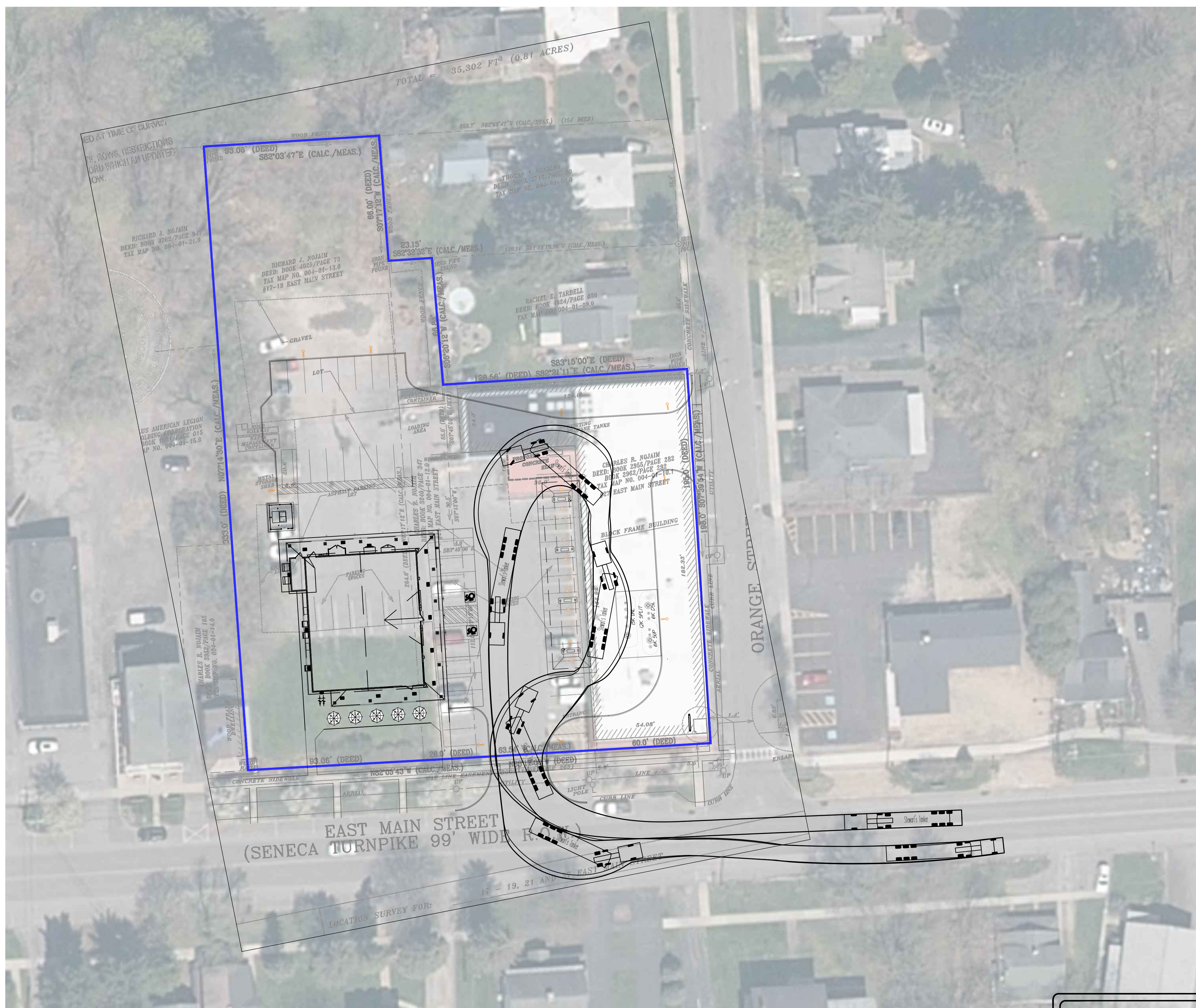
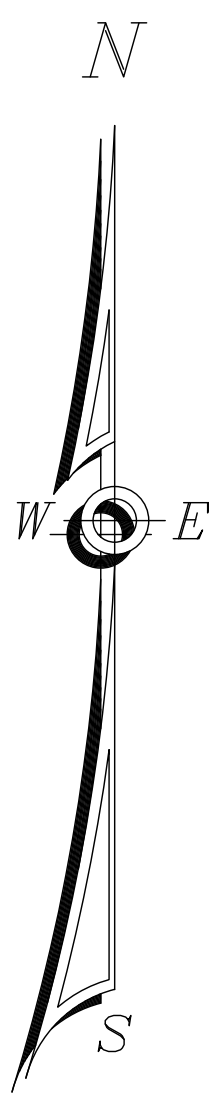
CALCULATION SUMMARY

LABEL	CALC TYPE	UNITS	AVG	MAX	MIN
EXTENTS OF LIGHT	ILLUMINANCE	FC	139	15.4	0.0
CANOPY	ILLUMINANCE	FC	13.25	15.4	4.2
PARKING	ILLUMINANCE	FC	2.41	8.7	0.2
SIDEWALKS	ILLUMINANCE	FC	6.90	10.1	2.7



LUMINAIRE SCHEDULE

SYMBOL	QTY	LABEL	ARRANGEMENT	DESCRIPTION	LUM. MATTS	LUM. LUMENTS	COMMENTS
	4	ARE-ED6-3MB-DA-04-E-IL-B2-525	SINGLE	POLE LIGHT, 40 WHITE LED, BACK SHIELDED, 525mA DRIVER, DIRECT ARM MOUNT	34	8891	3000K LIGHT COLOR - SPECIAL ORDER
	8	CAN-304-PS-RS-04-E-IL-WH-350	SINGLE	CANOPY LIGHT, 40 WHITE LED, 350mA DRIVER, RECESSED MOUNT	100	10862	3000K LIGHT COLOR - SPECIAL ORDER
	2	SEC-ED6-3M-NM-04-E-IL-WH-525	SINGLE	SECURITY LIGHT, 40 WHITE LED, 525mA DRIVER, WALL MOUNTED	60	5674	3000K LIGHT COLOR - SPECIAL ORDER
	14	SFT-228-5M-RM-03-E-IL-WH-525	SINGLE	SOFFIT LIGHT, 30 WHITE LED, 525mA DRIVER, RECESSED MOUNT	54	4436	3000K LIGHT COLOR - SPECIAL ORDER

	STORE NAME, ABBREVIATION & NO.		MARCELLUS - MRC - 335	
	SITE LOCATION		27 EAST MAIN STREET - MARCELLUS, NY 13108	
	DATE	NO.	REVISIONS	
		DRAWN BY:	MA	
<small>SARATOGA SPRING, NY 12866 TEL: (518)581-1200 FAX: (518)581-1209</small>		SCALE:	1" = 30'	
<small>ALTERNATIONS TO THIS DOCUMENT BY OTHER THAN AN AUTHORIZED LICENSED PROFESSIONAL ENGINEER IS ILLEGAL AND A VIOLATION OF THE NEW YORK STATE EDUCATION LAW</small>		DATE:	1-2-2024	
TITLE:		PHOTOMETRIC PLAN		
DRAWING NO.		S-7		



Overall Length	62.559ft
Overall Width	8.202ft
Overall Body Height	11.141ft
Min. Body Ground Clearance	1.049ft
Max. Track Width	8.202ft
Lock-to-lock time	4.00s
Curb to Curb Turning Radius	31.650ft

	STORE NAME, ABBREVIATION & NO. MARCELLUS - MRC - 335	
	SITE LOCATION 27 EAST MAIN STREET - MARCELLUS, NY 13108	
	DATE	NO. REVISIONS
		
<small>SARATOGA SPRINGS, NY 12866 TEL: (518)581-1200 FAX: (518)581-1209</small>		DRAWN BY: MA SCALE: 1" = 30" DATE: 1-2-2024 DRAWING NO. 5-8
<small>ALTERATIONS TO THIS DOCUMENT BY OTHER THAN AN AUTHORIZED LICENSED PROFESSIONAL ENGINEER IS ILLEGAL AND A VIOLATION OF THE NEW YORK STATE EDUCATION LAW</small>		
TITLE: VEHICLE TRACKING PLAN		