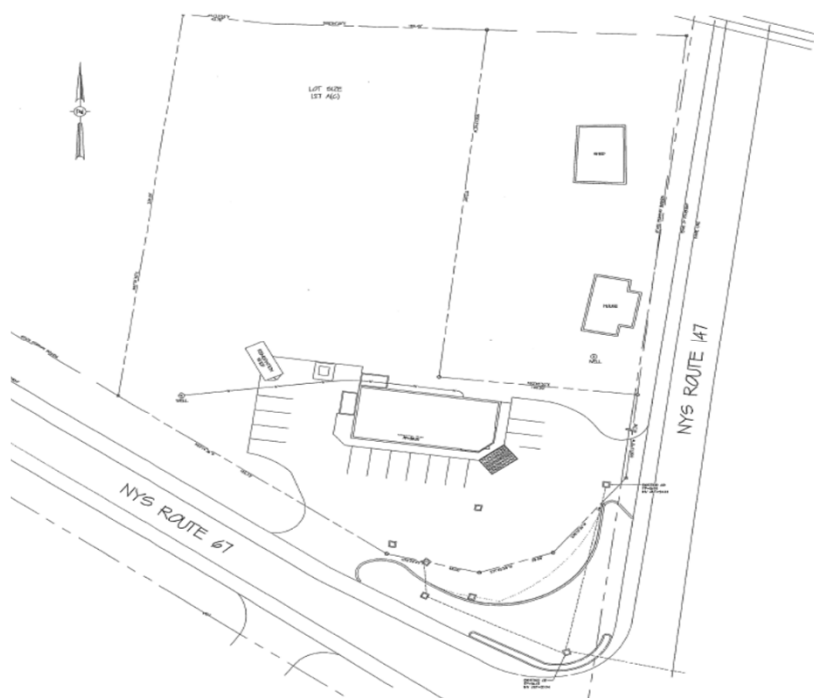


For Sale

2370 Route 67, Amsterdam, NY 12010



BUILDING SIZE: 2,330 SQFT
TOTAL LOT SIZE: 127 ACRES

SCOTCH CHURCH - 5003 - 540	
2370 ROUTE 67 - AMSTERDAM, NY	
STATE	REVENUE
Stewart's	
FOR SALE AND CONSTRUCTION OFFERS, BY DEED OR OTHERWISE, SEE DEED	
DATE	5-1
SITE PLAN	

RETAIL/OFFICE SPACE AVAILABLE

FEATURES:

± 2,330 SF of retail space available

LOCATION:

2370 Route 67, Amsterdam

UTILITIES:

Well and septic

ZONING:

Residential/Agriculture

PRICE: For sale at \$355,000 with deed restriction no convenience store/gas

TAX INFORMATION:

Tax ID #: 224-1-7
18 Assessment: \$355,000
18 Gen Tax: \$2,036
17/18 School: \$7,671
Combined Tax: \$9,707

ADDITIONAL FEATURES:

- Parking for 11 +/- vehicles
- 1.27 +/- acre parcel

JENNIFER L. HOWARD

Property Manager • Licensed Real Estate Salesperson
518.581.1201 ext 4415 | 518.421.4009 cell | 518.581.1209 fax
jhoward@stewartshops.com
Stewart's Shops Corporation PO Box 435, Saratoga Springs, NY 12866

